



MONTHLY MEMBERSHIP PROGRESS REPORT

District 322C3

Results as of: 2/28/2015

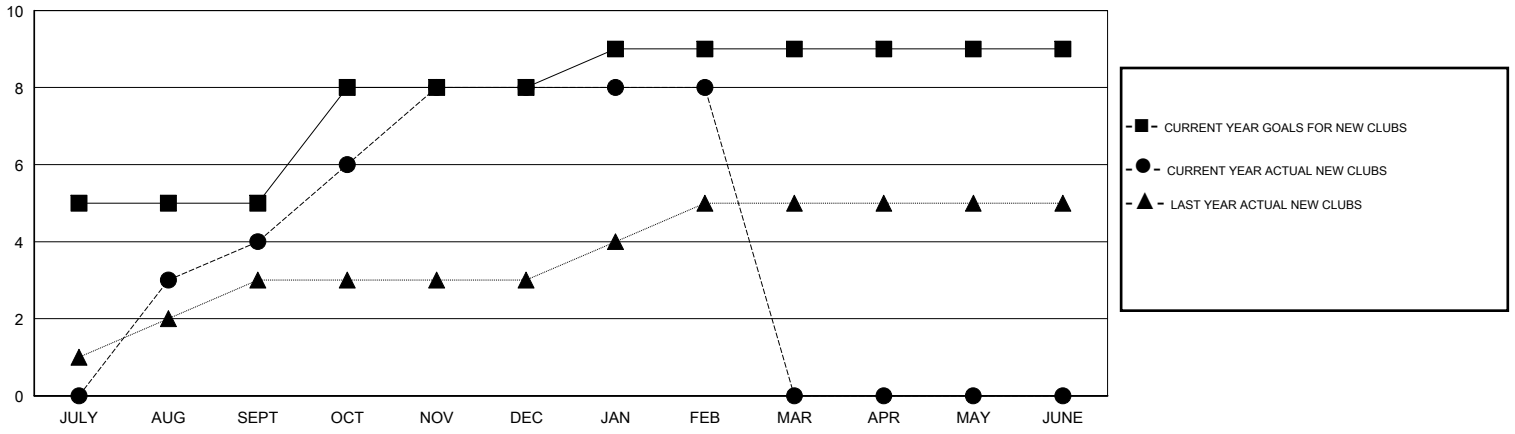
GMT: NAZMUL HAQUE

LOCATION INDIA

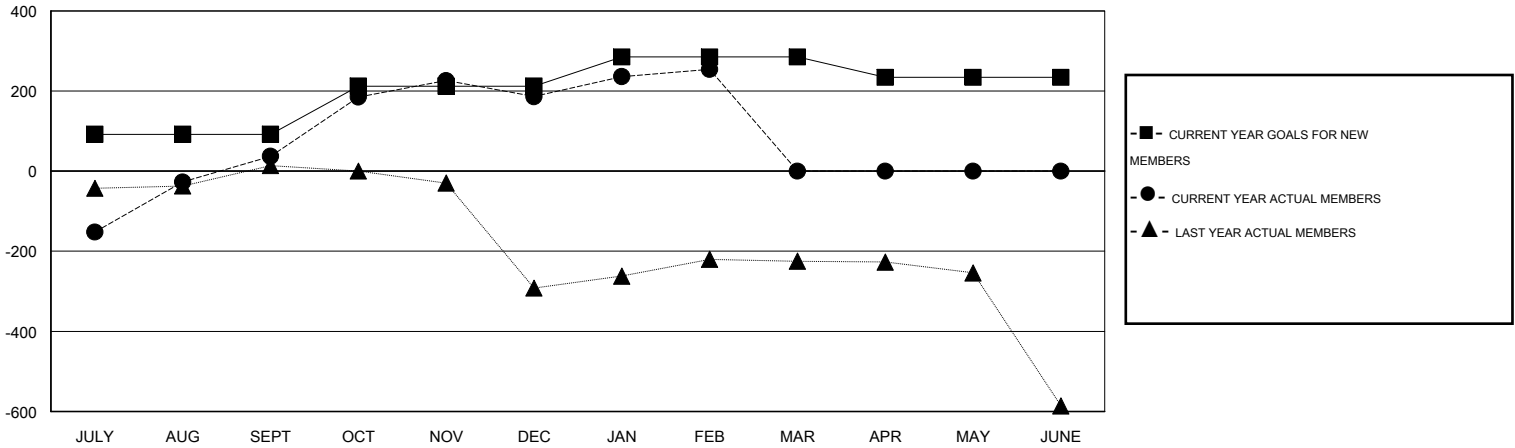
GMT CA 6

Clubs					Members				
RESULTS FOR 2014-2015					RESULTS FOR 2014-2015				
QUARTER	NEW CLUB GOAL	NEW CLUBS	DROPPED CLUBS	NET GAIN/LOSS	QUARTER	NEW MEMBER GOAL	CHARTER AND NEW MEMBERS ADDED	DROPPED MEMBERS	NET GAIN/LOSS
JULY/AUG/SEPT	5	4	3	1	JULY/AUG/SEPT	92	307	270	37
OCT/NOV/DEC	3	4	1	3	OCT/NOV/DEC	120	233	84	149
JAN/FEB/MAR	1	0	2	-2	JAN/FEB/MAR	73	131	63	68
APR/MAY/JUNE	0	0	0	0	APR/MAY/JUNE	-51	0	0	0

GOALS AND ACTUAL NEW CLUBS CUMULATIVE



GOALS AND ACTUAL MEMBERS CUMULATIVE



DROPPED CLUBS: 6	75 CLUBS OF 105 ADDED 1 OR MORE NEW MEMBERS	<u>GENDER DISTRIBUTION</u>	
<u>DROPPED MEMBERS</u>		MALE	2,705 (78.89%)
DECEASED	8	FEMALE	724 (21.11%)
CLUB CANCELLED	102	<u>FAMILY UNIT MEMBERS</u> 1,767	
OTHER	307	<u>HEAD OF HOUSEHOLD</u> 705	
TOTAL	417	<u>NON-HEAD OF HOUSEHOLD</u> 1,062	

[CLICK HERE FOR HEALTH ASSESSMENT DATA](#)